



Certificate of Analysis

QA SAMPLE - INFORMATIONAL ONLY

1 of 3

ICAL ID: 20201001-113
Sample: CA201001-003-005
Plant Juice Oil Batch: PJO200922
Strain: Plant Juice Oil Batch: PJO200922
Category: Ingestible

Isodiol
Lic. #
None
San Diego, CA 92121
Lic. #

Batch#: PJO200922
Primary Size:
Batch Size:
Collected: 10/02/2020; Received: 10/02/2020
Completed: 10/02/2020

Moisture NT Water Activity NT	Δ 9-THC 2.28 mg/g	CBD 67.03 mg/g	Total Cannabinoids 72.52 mg/g	Total Terpenes NT
--	-----------------------------	-------------------	----------------------------------	----------------------

Summary	SOP Used	Date Tested	Complete
Batch	SOP:POT-T005-Tinc	10/01/2020	Complete
Cannabinoids			



Scan to see results

Cannabinoid Profile

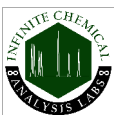
Analyte	LOQ	LOD	%	mg/g	Analyte	LOQ	LOD	%	mg/g
THCa	0.03	0.02	ND	ND	CBDV	0.03	0.02	0.048	0.48
Δ 9-THC	0.03	0.02	0.228	2.28	CBN	0.03	0.02	0.013	0.13
Δ 8-THC	0.03	0.02	ND	ND	CBGa	0.03	0.02	ND	ND
THCV	0.03	0.02	ND	ND	CBG	0.03	0.02	0.140	1.40
CBDa	0.03	0.02	ND	ND	CBC	0.03	0.02	0.120	1.20
CBD	0.03	0.02	6.703	67.03	Total			7.252	72.52

Total THC=THCa * 0.877 + d9-THC; Total CBD = CBDa * 0.877 + CBD; NR= Not Reported, ND= Not Detected, *Reported by Dry Mass*; *analytical instrumentation used Cannabinoids:UHPLC-DAD, Moisture:Mass by Drying, Water Activity:Water Activity Meter, Foreign Material:Microscope* *Density tested at a temperature range between 19-24 °C, *Water Activity tested at a humidity range between 0-90% Relative Humidity. All QA samples are sampled by the client, All California State Compliant samples sampled using SAMPL-SOP-001

Terpene Profile

Analyte	LOQ	LOD	%	mg/g	Analyte	LOQ	LOD	%	mg/g
---------	-----	-----	---	------	---------	-----	-----	---	------

NR= Not Reported thus no analysis was performed, ND= Not Detected thus the concentration is less then the Limit of Detection (LOD), *analytical instrumentation used:HS-GC-MS*



Infinite Chemical Analysis Labs
8380 Miramar Mall #102
San Diego, CA
(858) 623-2740
www.infiniteCAL.com
Lic# C8-0000019-LIC

Josh M Swider

Josh Swider
Lab Director, Managing Partner
10/02/2020

Confident Cannabis
All Rights Reserved
support@confidentcannabis.com
(866) 506-5866
www.confidentcannabis.com



This product has been tested by Infinite Chemical Analysis, LLC using valid testing methodologies and a quality system as required by state law. All LQC samples were performed and met the prescribed acceptance criteria in 16 CCR section 5730, pursuant to 16 CCR section 5726(e)(13). Values reported relate only to the product tested. Infinite Chemical Analysis, LLC makes no claims as to the efficacy, safety or other risks associated with any detected or non-detected levels of any compounds reported herein. This Certificate shall not be reproduced except in full, without the written approval of Infinite Chemical Analysis, LLC.



Certificate of Analysis

QA SAMPLE - INFORMATIONAL ONLY

2 of 3

ICAL ID: 20201001-113
Sample: CA201001-003-005
Plant Juice Oil Batch: PJO200922
Strain: Plant Juice Oil Batch: PJO200922
Category: Ingestible

Isodiol
Lic. #
None
San Diego, CA 92121

Lic. #

Batch#: PJO200922
Primary Size:
Batch Size:
Collected: 10/02/2020; Received: 10/02/2020
Completed: 10/02/2020

Residual Solvent Analysis

Category 1	LOQ	LOD	Limit	Status	Category 2	LOQ	LOD	Limit	Status	Category 2	LOQ	LOD	Limit	Status
------------	-----	-----	-------	--------	------------	-----	-----	-------	--------	------------	-----	-----	-------	--------

NR= Not Reported thus no analysis was performed, ND= Not Detected thus the concentration is less then the Limit of Detection (LOD) , *analytical instrumentation used=HS-GC-MS*

Heavy Metal Screening

	LOQ	LOD	Limit	Status
--	-----	-----	-------	--------

NR= Not Reported thus no analysis was performed, ND= Not Detected thus the concentration is less then the Limit of Detection (LOD) , *analytical instrumentation used:ICP-MS*

Microbiological Screening

	Result	Status
--	--------	--------

ND=Not Detected; *analytical instrumentation used:qPCR*



Infinite Chemical Analysis Labs
8380 Miramar Mall #102
San Diego, CA
(858) 623-2740
www.infiniteCAL.com
Lic# C8-0000019-LIC

Josh M Swider

Josh Swider
Lab Director, Managing Partner
10/02/2020

Confident Cannabis
All Rights Reserved
support@confidentcannabis.com
(866) 506-5866
www.confidentcannabis.com



This product has been tested by Infinite Chemical Analysis, LLC using valid testing methodologies and a quality system as required by state law. All LQC samples were performed and met the prescribed acceptance criteria in 16 CCR section 5730, pursuant to 16 CCR section 5726(e)(13). Values reported relate only to the product tested. Infinite Chemical Analysis, LLC makes no claims as to the efficacy, safety or other risks associated with any detected or non-detected levels of any compounds reported herein. This Certificate shall not be reproduced except in full, without the written approval of Infinite Chemical Analysis, LLC.



Certificate of Analysis

QA SAMPLE - INFORMATIONAL ONLY

3 of 3

ICAL ID: 20201001-113
Sample: CA201001-003-005
Plant Juice Oil Batch: PJO200922
Strain: Plant Juice Oil Batch: PJO200922
Category: Ingestible

Isodiol
Lic. #
None
San Diego, CA 92121

Lic. #

Batch#: PJO200922
Primary Size:
Batch Size:
Collected: 10/02/2020; Received: 10/02/2020
Completed: 10/02/2020

Chemical Residue Screening

Category 1	LOQ	LOD	Status	Mycotoxins	LOQ	LOD	Limit	Status
------------	-----	-----	--------	------------	-----	-----	-------	--------

Category 2	LOQ	LOD	Limit	Status	Category 2	LOQ	LOD	Limit	Status
------------	-----	-----	-------	--------	------------	-----	-----	-------	--------

Unknown Analyte(s):

NR= Not Reported thus no analysis was performed, ND= Not Detected thus the concentration is less then the Limit of Detection (LOD) , *analytical instrumentation used:LC-MSMS & GC-MSMS*



Infinite Chemical Analysis Labs
8380 Miramar Mall #102
San Diego, CA
(858) 623-2740
www.infiniteCAL.com
Lic# C8-0000019-LIC

Josh M Swider

Josh Swider
Lab Director, Managing Partner
10/02/2020

Confident Cannabis
All Rights Reserved
support@confidentcannabis.com
(866) 506-5866
www.confidentcannabis.com



This product has been tested by Infinite Chemical Analysis, LLC using valid testing methodologies and a quality system as required by state law. All LQC samples were performed and met the prescribed acceptance criteria in 16 CCR section 5730, pursuant to 16 CCR section 5726(e)(13). Values reported relate only to the product tested. Infinite Chemical Analysis, LLC makes no claims as to the efficacy, safety or other risks associated with any detected or non-detected levels of any compounds reported herein. This Certificate shall not be reproduced except in full, without the written approval of Infinite Chemical Analysis, LLC.